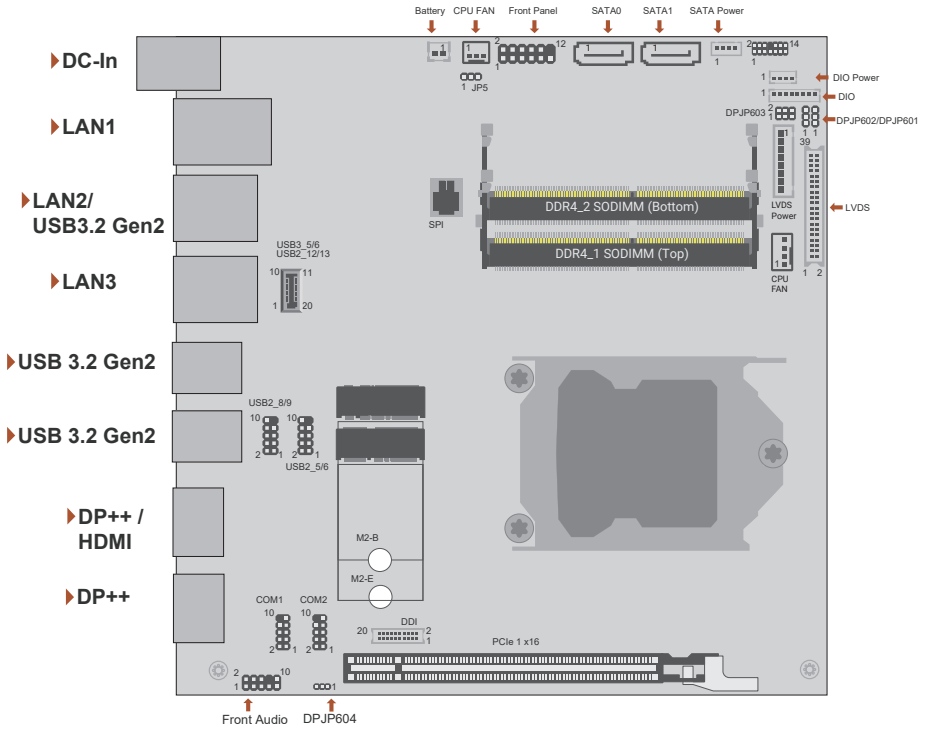


Board Layout



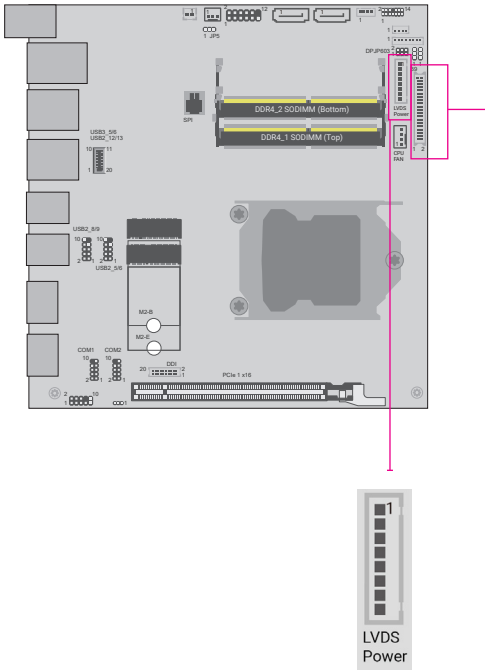
Clear CMOS Data	JP5
Normal (default)	1-2 On
Clear CMOS Data	2-3 On

USB power	DPJP604
5VSB (default)	1-2 On
5V	2-3 On

the power level of LVDS LCD inverter connector	DPJP2
+12V (default)	1-2 On
+5V	2-3 On

the power supplied with the LCD panel	DPJP3
+12V	1-2 On
+5V	3-4 On
+3.3V (default)	5-6 On

the power supplied with the LVDS LCD panel	DPJP601
3.3V (default)	1-2 On
5V	2-3 On



LVDS LCD Panel

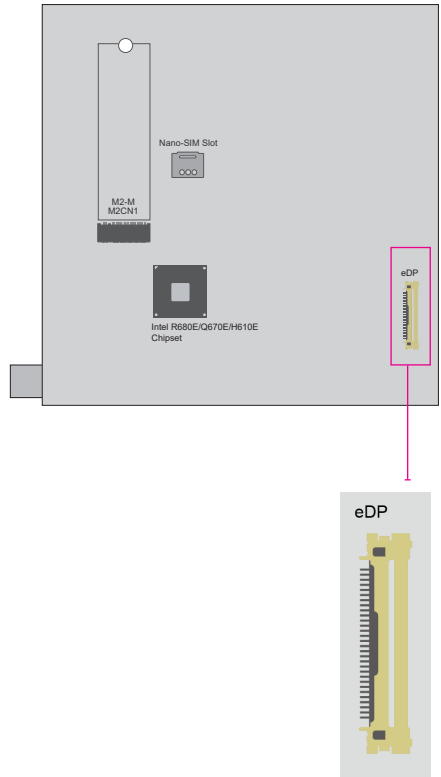
Pin	Assignment	Pin	Assignment
1	GND	2	GND
3	LVDSA_3+	4	LVDSB_3+
5	LVDSA_3-	6	LVDSB_3-
7	GND	8	GND
9	LVDSA_2+	10	LVDSB_2+
11	LVDSA_2-	12	LVDSB_2-
13	GND	14	GND
15	LVDSA_1+	16	LVDSB_1+
17	LVDSA_1-	18	LVDSB_1-
19	GND	20	GND
21	LVDSA_0+	22	LVDSB_0+
23	LVDSA_0-	24	LVDSB_0-
25	GND	26	GND
27	LVDSA_CLK+	28	LVDSB_CLK+
29	LVDSA_CLK-	30	LVDSB_CLK-
31	GND	32	GND
33	DDC_CLK	34	NC
35	DDC_DATA	36	+3.3V
37	Panel Power	38	Panel Power
39	Panel Power	40	Panel Power

LCD/Inverter Power

Pin	Assignment
1	GND
2	GND
3	Panel Inverter Brightness Voltage Control
4	Panel Power
5	+3.3V
6	Panel Backlight On/Off Control
7	LCD/Inverter Power
8	LCD/Inverter Power

eDP

Pin	Assignment	Pin	Assignment
1	NC	21	eDP Panel PWR
2	GND	22	NC
3	eDP_Lane 3-	23	GND
4	eDP_Lane 3+	24	GND
5	GND	25	GND
6	eDP_Lane 2-	26	GND
7	eDP_Lane 2+	27	Hot Plug
8	GND	28	eDP_GND
9	eDP_Lane 1-	29	eDP_GND
10	eDP_Lane 1+	30	eDP_GND
11	GND	31	eDP_GND
12	eDP_Lane 0-	32	Panel Backlight On/Off Control
13	eDP_Lane 0+	33	Panel Inverter Brightness Voltage Control
14	GND	34	NC
15	eDP_AUX+	35	NC
16	eDP_AUX-	36	Inverter PWR
17	GND	37	Inverter PWR
18	eDP Panel PWR	38	Inverter PWR
19	eDP Panel PWR	39	Inverter PWR
20	eDP Panel PWR	40	NC



Front Panel

	Pin	Assignment		Pin	Assignment
HD-LED	1	NC	PWR-LED	2	LED Power
	3	HDD Power		4	LED Power
	5	Signal		6	Signal
RESET	7	GND	ATX-SW	8	GND
	9	Signal		10	Signal
	11	NC		12	---

Digital I/O

Pin	Assignment
1	DIO7
2	DIO6
3	DIO5
4	DIO4
5	DIO3
6	DIO2
7	DIO1
8	DIO0

Digital I/O Power

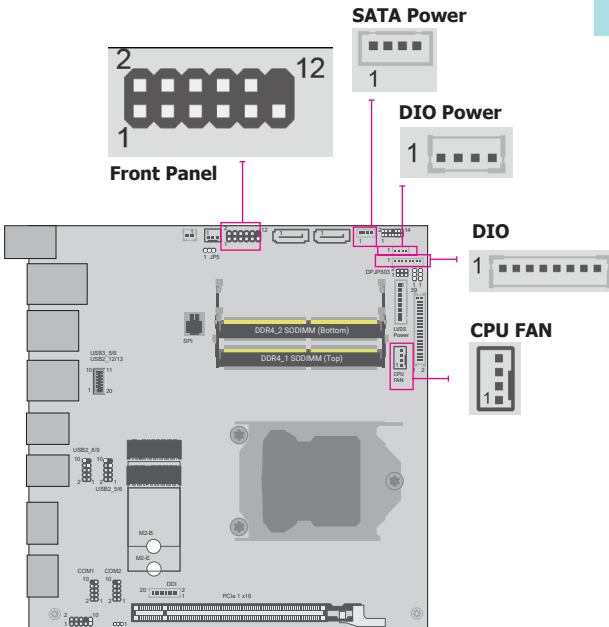
Pin	Assignment
1	+12V
2	GND
3	5VSB
4	+5V

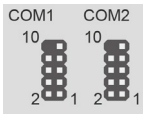
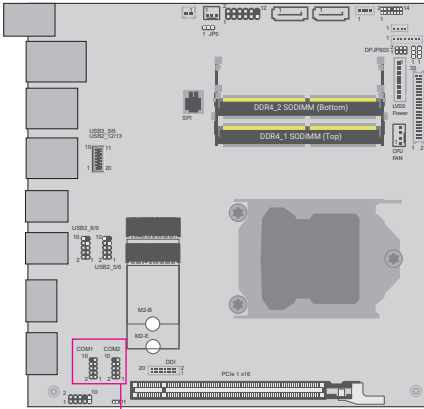
CPU FAN

Pin	Assignment
1	GND
2	Power
3	Sense
4	Speed Control

SATA Power

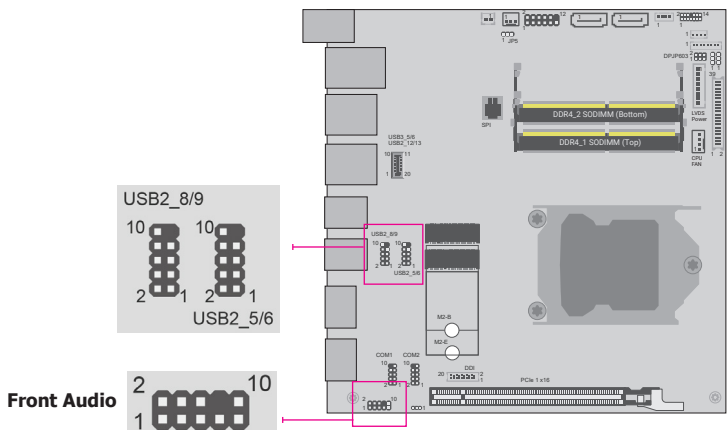
Pin	Assignment
1	+12V
2	GND
3	GND
4	5V





J15 COM1 / J16 COM2

Pin	RS232	RS422 Full Duplex	RS485
1	DCD-	TXD-	DATA-
2	RD	TXD+	DATA+
3	TD	RXD+	N.C.
4	DTR-	RXD-	N.C.
5	GND	GND	GND
6	DSR-	N.C.	N.C.
7	RTS-	N.C.	N.C.
8	CTS-	N.C.	N.C.
9	RI-	N.C.	N.C.



Front Audio

Pin	Assignment	Pin	Assignment
1	Mic-L	2	GND
3	Mic-R	4	NC
5	Line-Out-R	6	Mic-JD (sense)
7	GND	8	KEY
9	Line-Out-L	10	Line-JD (sense)

USB 2.0 5-6/8-9 Headers

Pin	Assignment	Pin	Assignment
1	VCC	2	VCC
3	DATA-	4	DATA-
5	DATA+	6	DATA+
7	GND	8	GND
9	---	10	---