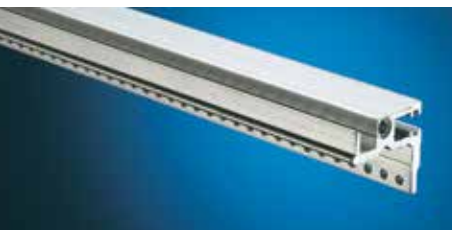


### Horizontal rail Vario CON 1, with integral Z rail for connector



To accommodate guide rails. Integral Z rail for mounting connectors (CON) to IEC 60 603-2.

- HP pitch pattern of holes for the precise installation of guide rails
- Tapped holes M2.5 for connector mounting
- Applicable for top-mounting under covers
- M4 thread on end face
- Straight-through core hole

#### Material

Extruded aluminium section

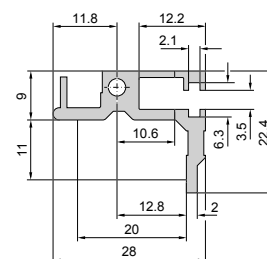
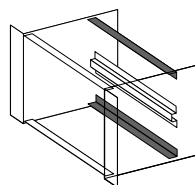
#### Surface finish

Clear-chromated

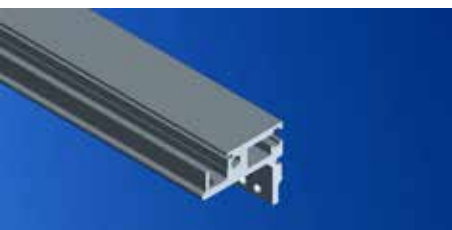
Usable width (HP)	Packs of	Order No.
42	1	<b>3686.191</b>
63	1	<b>3686.919</b>
84	1	<b>3686.159</b>

#### + Also required

Assembly screws M4 x 12  
Packs of 100, order no. 3654.300  
see page 202



### Horizontal rail Vario CON 2, with integral Z rail for connector



To accommodate guide rails. Integral Z rail for mounting connectors (CON) to DIN 41612

- HP pitch pattern of holes for the precise installation of guide rails
- 84 tapped holes M2.5 for connector mounting
- Not suitable for mounting under covers
- M4 thread on end face
- Straight-through core hole

#### Material

Extruded aluminium section

#### Surface finish

Clear-chromated

Usable width (HP)	Packs of	Order No.
84	1	<b>9901.991</b>

#### + Also required

Assembly screws M4 x 12  
Packs of 100, order no. 3654.300  
see page 202

